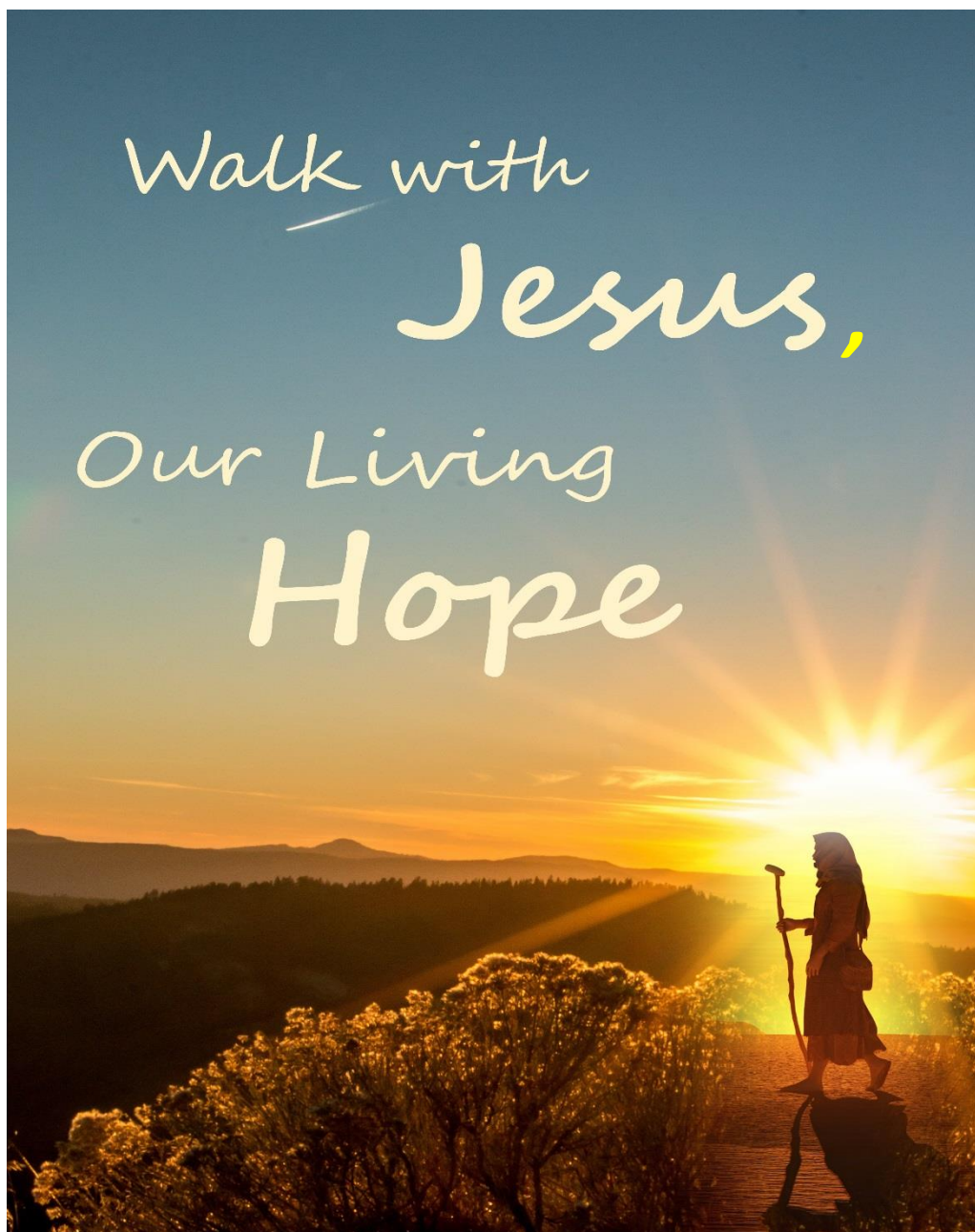


ST. PAUL SCHOOL

2020-2021



Parent Handbook

TABLE OF CONTENTS

CONTACT INFORMATION	4
PERSONNEL	4
STAFF	4
PARISH EDUCATION COMMITTEE	5
UNIFORM SUPPLIER	5
A. ST. PAUL SCHOOL: A COMMUNITY OF FAITH	6
1. SCHOOL PHILOSOPHY	6
2. SCHOOL MISSION STATEMENT	6
3. IMPLICATION OF THE SCHOOL PHILOSOPHY FOR PARENTS	7
<i>Parents' Roles</i>	7
4. THE STRUCTURE OF THE CATHOLIC INDEPENDENT SCHOOLS OF VANCOUVER ARCHDIOCESE (C.I.S.V.A.)	8
B. SCHOOL PROGRAMS	9
1A. SCHOOL CURRICULUM	9
1B. REPORTING	9
2. SCHOOL LITURGIES & ASSEMBLIES	9
3. SACRAMENTAL PROGRAMS	9
4. EXTRA-CURRICULAR ACTIVITIES	10
5. LIBRARY	10
6. FIELDTRIPS	10
7. BOOSTER SEAT LEGISLATION	10
8. OUTDOOR EDUCATION	11
C. MEDICAL AND SAFETY PROCEDURES	12
1. MEDICAL PROCEDURES	12
2. SAFETY PROCEDURES	12
a) <i>Daily Presence at School</i>	12
b) <i>Temporary Change in Guardianship</i>	12
c) <i>Fire Drill</i>	12
d) <i>Earthquake Drill</i>	12
e) <i>Lockdown and Building Evacuation Procedures</i>	13
f) <i>School Closure</i>	14
D. SCHOOL REGULATIONS AND EXPECTATIONS	15
1. EXPECTATIONS FOR STUDENTS	15
2. DISCIPLINE	15
3. HARASSMENT AND BULLYING PREVENTION	15
4. STUDENT SUSPENSION/EXPULSION POLICY	16
E. SCHOOL SCHEDULE AND GENERAL INFORMATION	17
1. WEEKLY SCHEDULE	17
2. ABSENTEEISM	17
3. CARE OF BOOKS AND PROPERTY	18
4. SCHOOL UNIFORMS	18
5. LOST AND FOUND ARTICLES	19
6. COMMUNICATION FROM SCHOOL	19
7. HOMEWORK POLICY	19
8. LINES OF COMMUNICATIONS AND COMPLAINT PROCEDURE	19
9. ADMISSIONS	20
10. YEARLY FEES	20

<i>A. Tuition Rates for the school year</i>	20
<i>B. Activity Fee</i>	20
<i>C. Participation Program and Fee</i>	21
11. PARENT PARTICIPATION	21
12. DROP OFF AND PICK UP PROCEDURES	22
13. LUNCHES AND CLASSROOM DELIVERIES	22
14. NO SMOKING POLICY	22
APPENDIX "A"	ERROR! BOOKMARK NOT DEFINED.
STATEMENT OF COMMITMENT FOR PARENTS	23
APPENDIX "B"	24
EARLY MORNING SCHOOL CLOSURE PROCEDURE	24
APPENDIX "C"	25
COMPLAINTS POLICY	25
APPENDIX "D"	27
SUSPENSIONS AND EXPULSIONS	27
APPENDIX "E"	29
HARASSMENT AND BULLYING	27
APPENDIX "F"	30
PERSONAL INFORMATION PRIVACY POLICY FOR PARENTS AND STUDENTS	30
APPENDIX "G"	35
DISCIPLINE POLICY	35
APPENDIX "H"	36
MEDIA POLICY	36
APPENDIX "I"	37
RECOMMENDATIONS FOR E-MAIL AND INTERNET USE	37
APPENDIX "J"	40
SPECIAL EDUCATION	40
APPENDIX "K"	41
ABUSE/NEGLECT	41
APPENDIX "L"	45
STUDENT HEALTH	45
APPENDIX "M"	49
ANAPHYLAXIS	49

CONTACT INFORMATION

St. Paul Elementary School
8251 St. Albans Road,
Richmond, BC
V6Y 2L2

Phone: 604-277-4487
Facsimile: 604-277-1810
Website: <http://stpaulschool.ca>
Email: office@stpaulschool.ca

PERSONNEL

STAFF

The school's staff for 2020-2021 is as follows:

PASTOR: Fr. Thomas Smith
PRINCIPAL: Ms. Maureen Moorehead
VICE PRINCIPAL: Mrs. Karen Jew
SECRETARY: Mrs. Christine Ong
ACCOUNTANT: Mrs. Helen Thayakaanthan

KINDERGARTEN: Mrs. Katherine Dos Santos
KINDERGARTEN: Ms. Cassie Crawford
GRADE 1: Mrs. Nicole Kelly
GRADE 2: Ms. Jennifer Wu
GRADE 3: Ms. Myriam Boily
GRADE 4: Mrs. Gail Imoo
GRADE 5: Ms. Clarissa Guevara
GRADE 6: Mrs. Maria Caprilli
GRADE 6: Ms. Michelle Carroll
GRADE 7: Mr. Robert Kirkham

PHYSICAL EDUCATION: Mr. Gregory Kelly
MUSIC: Ms. Monica Rumpel
FRENCH: Mrs. Maria Caprilli

LEARNING RESOURCE CLASSROOM:

DEPARTMENT HEAD: Mrs. Karen Jew
LEARNING RESOURCE TEACHER: Mrs. Maylin Fraser
LEARNING RESOURCE TEACHER: Ms. Michelle Carroll
EDUCATION ASSISTANT: Ms. Zoe Ahlmstrom
EDUCATION ASSISTANT: Mrs. Anna Santa Ana
EDUCATION ASSISTANT: Mrs. Teresa Schell
EDUCATION ASSISTANT: Mrs. Puneet Marwaha
EDUCATION ASSISTANT: Mrs. Jasmine Jagpal
EDUCATION ASSISTANT: Mrs. Inga Samon
EDUCATION ASSISTANT: Mrs. Bickie Lam
EDUCATION ASSISTANT: Ms. Manisha Mallh
EDUCATION ASSISTANT: Ms. Mackenzie Crawshaw
EDUCATION ASSISTANT: Ms. Lisandra Sousa

PARISH EDUCATION COMMITTEE

The Parish Education Committee for 2020-2021 is as follows:

PASTOR: Fr. Thomas Smith 604-277-3213

PRINCIPAL:..... Ms. Maureen Moorehead mmoorehead@stpaulschool.ca

Contact Information for the following PEC Members: pec@stpaulschool.ca

CHAIRPERSON/CISVA REP: Dr. John Yun

VICE CHAIR/PARENT PARTICIPATION: Mr. Mark Acosta

TREASURER/PARISH COUNCIL REP : Mr. Enrique Bravo

SECRETARY/SOCIAL COMMITTEE: Mrs. Carolyn Law

MAINTENANCE: Mr. Kelsey Mah

PARENT PARTICIPATION: Mrs. Louveign Secord

IT:..... Mr. Joseph Lo

The role of the parish education committee is to cooperate with and to assist the pastor in the operation of the school. The committee sees that archdiocesan policies are implemented and they set policy for the local school. You are welcome to bring concerns or questions to the PEC. Written communications are encouraged.

The committee manages the finances of the school and the hiring of staff in consultation with the principal and they assist the pastor and principal in the general overview of school programs.

UNIFORM SUPPLIER

You may shop for all uniform items (with the exception of anything with “St. Paul School” name on it), at any store you choose.

Following is the uniform supplier:



5760 Ferrier St., Montreal, Quebec H4P 1M7

T: 514-344-5454 ext. 228 • 1-800-667-7105

Fax/Télé.: 514-344-5350 • 1-855-344-5350

Email/Courriel: howard@topmarks.ca

Website/Site Web: www.topmarks.ca

St. Paul School

Parent Handbook

Welcome to the community of St. Paul. We hope the following information will help you become aware of our policies and procedures so that we can all work well together.

A. ST. PAUL SCHOOL: A COMMUNITY OF FAITH

1. SCHOOL PHILOSOPHY

As children of God, made in God's image, we are pilgrims learning and teaching at St. Paul School. Together we work to serve God and our fellow sisters and brothers. Jesus Christ is the focal point of our school life; where we not only learn about Christ, but also teach Christian principles by work and example. The activities of the school are filled and governed by the spirit of the Gospel. At St. Paul we endeavour to develop a true Christian community in which all members' work together to promote the growth of one another as we journey towards our final home, Heaven. We challenge the students to achieve their highest level of performance and strive for excellence.

2. SCHOOL MISSION STATEMENT

St. Paul School exists to promote the development of its students. In cooperation with parents, St. Paul School endeavors to develop the entire person; to develop spiritual, intellectual, physical, social, and emotional aspects of every member of the school community, and to foster a school environment that is safe, respectful, and accepting of all students, so as to enable them to become responsible members of the Church and society.

3. IMPLICATION OF THE SCHOOL PHILOSOPHY FOR PARENTS

Our philosophy is based on the great commandment: “You shall love the Lord, your God, with your whole heart and soul and mind and strength; you shall love your neighbour as yourself.” In faith and love, we build a living Christian community. While the students are encouraged to aim for academic excellence, they are instructed in the Catholic faith as a way of life to be lived in empathy and understanding of others. The EDUCATION PROGRAM is directed toward the full development of the whole person the total integration of Catholic faith with personal life and culture. Parents, priests and teachers share the responsibility of providing the opportunities which will aid the students in acquiring such basic convictions which will enable them to take their place in society as mature, loving, caring persons who courageously remain faithful to their Christian commitment.

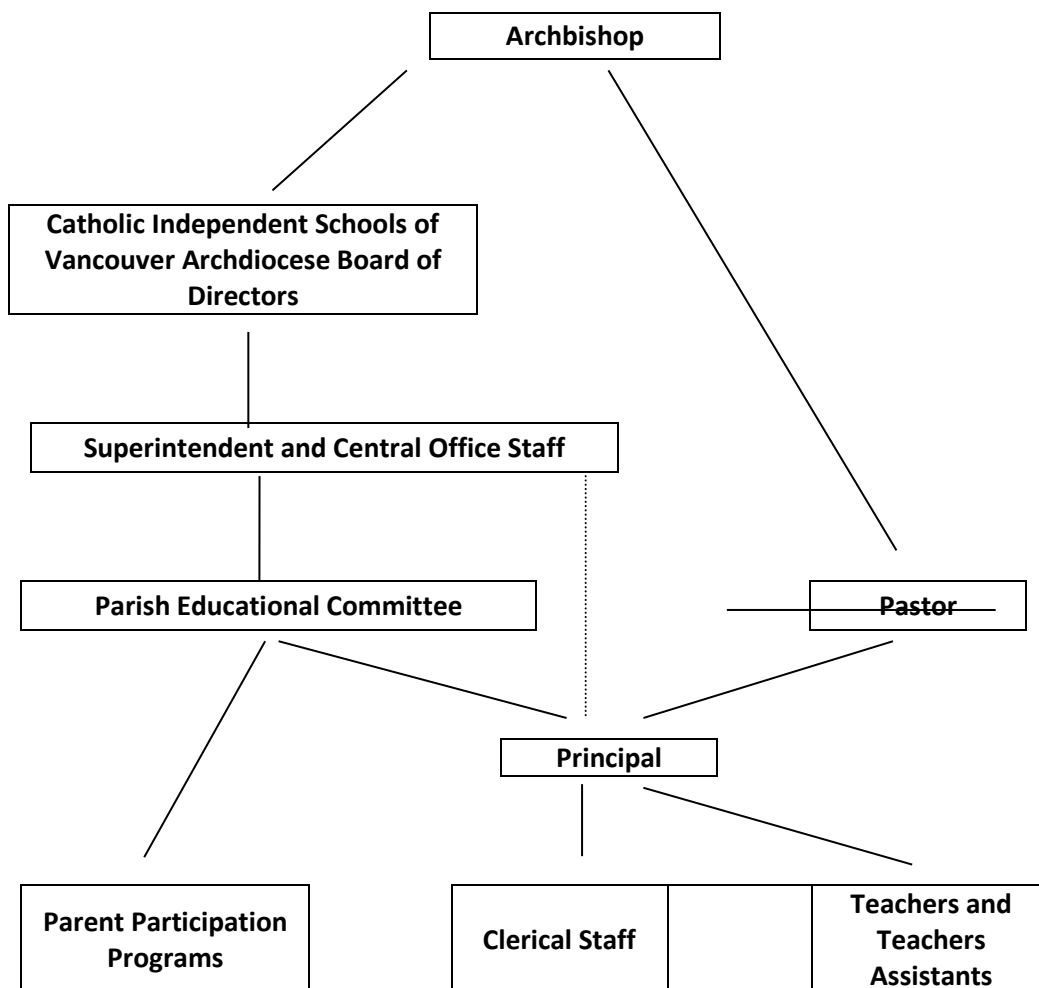
Parents' Roles

- When you enrol your children in St. Paul School you should understand that, in choosing this school, you are committing yourself to our philosophy of education.
- Christian values and attitudes are integrated throughout the day and should be evident in how we treat each other within the classroom, on the playground and in community gatherings. Together, all members, adults and children will foster a climate of understanding, caring and learning.
- In sending your children to St. Paul you do not abdicate your primary role in the education of your children, but simply delegate it. You continue to be the primary educators of your children “in the ways of the faith” (Baptism Liturgy). Parents are expected to see the school as supporting, not substituting for, the religious life and activities of the family.

All families are required to sign a Statement of Commitment. (Appendix A)

4. THE STRUCTURE OF THE CATHOLIC INDEPENDENT SCHOOLS OF VANCOUVER ARCHDIOCESE (C.I.S.V.A.)

The following diagram is included to assist in understanding the complex structure and the interactive roles involving parish organization and the integration necessary to ensure the success of our parish school and Catholic community.



"Motivated by a Christ centred vision of humanity and human history, our school promotes the formation of the whole person. Such formation embraces not only intellectual, but also physical, emotional, moral and spiritual dimensions of human growth. Intellect, emotions, creative ability and cultural heritage have a place in the life of the school. Human knowledge and skills are recognized as precious in themselves, but find their deepest meaning in God's plan for creation." From PHILOSOPHY OF EDUCATION FOR CATHOLIC SCHOOLS IN THE PROVINCE OF B.C. by Catholic Bishops of B.C.

B. SCHOOL PROGRAMS

1a. SCHOOL CURRICULUM

We follow the B.C. Ministry of Education Guidelines. French is included for all students.

Detailed information is available at the Ministry of Education website: www.bced.gov.bc.ca

Learning assistance is provided for those students who are experiencing difficulty in achieving the learning outcomes of the regular school programs.

1b. REPORTING

Reporting is an ongoing process that involves Assessment (the systematic process of gathering authentic data and evidence of student abilities and achievement) and Evaluation (the ongoing communication with student, parent and other professionals about student growth, development and achievement) with three Formal Written Reports to parents during the school year.

Included in this process are:

- Informal sharing of student work samples
- Informal reports such as notes, phone calls, interim reports, and meetings with parents
- Asking parents to sign student work to say they have seen it
- Regular use of student Agenda Books as a communication tool
- Portfolios
- Parent/teacher conferences on an as needed appointment
- Three Way or Student-Led Conferences each fall and spring

2. SCHOOL LITURGIES & ASSEMBLIES

The importance of the Mass is recognized as a way of increasing the faith of the children and helping in the building of a Christian community. Masses are regularly offered for the whole school. Students are given an opportunity to share in the preparation of the Masses and families are invited to attend. It is school policy that children are expected to participate in all aspects of school religion and sacramental programs.

Weekly assemblies are usually held each Friday at 9:00 am. This is a time when we pray together, make special announcements, and present special awards. Parents are welcome to attend. Updated information is available on the school monthly calendar.

3. SACRAMENTAL PROGRAMS

Each year the Grade Two children prepare for the sacraments of Reconciliation and Eucharist.

It is parish policy that the parents of students in this program attend all meetings and preparation Masses throughout the months preceding the reception of the Sacrament.

Students in Grade Seven prepare for the sacrament of Confirmation. Parents of all children being confirmed are required to attend all meetings relevant to their child's preparation for the sacrament.

The children wear white gowns, provided by the parish, for both the sacraments of Eucharist and Confirmation. The parish provides hair bands for all girls at First Communion.

4. EXTRA-CURRICULAR ACTIVITIES

The staff provides a variety of special activities for the students, such as: Primary and Intermediate Choirs, Speech Arts, Computer and Art Clubs and a variety of sports. Track and Field activities are for students in grades three to seven. Team sports (Volley Ball, Basketball, Badminton and Track and Field) are offered to students in grades five to seven. All students are encouraged to participate.

Parents are most welcome to participate in extracurricular programs through volunteer coaching, coming for practice and providing transportation.

5. LIBRARY

The library is the Resource Centre in the school. It is staffed by a librarian and/or parent volunteer and is open during school hours every day. All classes are scheduled for weekly library visits with access at any other time during the week. There is also a small collection of books and videos available for parents.

6. FIELDTRIPS

Fieldtrips and in-school presentations related to curriculum studies are seen as an integral component of a quality education. We rely upon the generosity of parent drivers for many of our field trips and we rent a bus when appropriate. **Drivers will be required to fill out a volunteer driver form. They will also need to provide a copy of their drivers licence and insurance coverage to the office.** Our general guideline for student field trip supervision is one adult supervisor for every 5 students.

The activity fee paid in September helps to cover the cost of most fieldtrips. Once we have exhausted our Activity Fee Account, families will be charged accordingly. Please be sure to return **signed** fieldtrip consent forms or your child will not be able to participate in a fieldtrip.

The Society of the Catholic Independent Schools has provided an Excess Third Party Liability policy to cover privately owned vehicles. This policy with I.C.B.C. gives protection to each teacher, parent, or other volunteer (or their spouse) while driving their own vehicle in the course of a school activity and with the authority or approval of the school board. Coverage of \$10,000,000.00 is in excess of the limit specified on the Owner's Certificate of Insurance.

Please note that staff cannot control news media access, photos/videos taken by the media or others in public locations (such as field trips or off school grounds) or school events open to the public, such as sports events, student performances, etc. These are considered public events.

7. BOOSTER SEAT LEGISLATION

As of July 1st, 2008, booster seats are mandatory for all children weighing at least 40 lbs, until they are 4'9" tall or nine years of age. (B.C. Ministry of Children and Family Development- 15/05/07).

Studies suggest that appropriately installed child safety seats can reduce serious injury by up to 67% and mortality by as much as 71%. Increased education of parents regarding proper use of child safety seats can protect children from potentially fatal crash forces. All drivers, not just the child's parents or guardians, will now have to use child restraints, as will drivers of rental vehicles, out-of-province vehicles and passenger vans.

This legislation, then, will also apply to our parents who drive students on field trips.

As such, it is school policy that as of July 1st, 2008, all parents driving students on school field trips must ensure that an approved booster seat is provided for and used by each child being driven, who meets the above criteria. For more information about the origins of this new legislation, or details regarding proper installation of car seats, please visit the B.C. Injury Research and Prevention Unit at: <http://www.injuryresearch.bc.ca/> .

Children in grades K-3 will be required to use a government approved booster seat. More information about correct installation may be obtained from the BCAA Traffic Safety Foundation at 604-298-5107. The Website is www.tsf-bcaa.com.

8. OUTDOOR EDUCATION

Outdoor Education is a part of our educational program culminating in a four day off site experience for the Grade Seven class. The cost of this trip is shared between Walkathon funds and the children's families.

C. MEDICAL AND SAFETY PROCEDURES

1. MEDICAL PROCEDURES

Each September you are required to fill out an emergency form to include specific medical information. Student medications are to be kept in the office with an accompanying doctor certified procedure for the student dosage. Students will receive medication at the office. It is imperative that you keep this record updated. Please send any updated information to the Office Manager as soon as possible.

If your child has allergies (food, medicine etc.) this information needs to be noted on the back of the emergency form. Please include specific directions to staff if there are any. This information will be used only if the child has an emergency situation.

2. SAFETY PROCEDURES

a) Daily Presence at School

All students are expected to remain at school for the entire school day. If for any reason a child is to leave the school property during the day, the parent needs to provide written permission to the school. This would include going off the property for lunch.

b) Temporary Change in Guardianship

If your child will be staying somewhere other than the family home, or if you are away and another family member is taking care of your children for any length of time, please provide us with the appropriate information (an alternate phone number, address, the name of the guardian and any change in pick-up) for that period.

c) Fire Drill

To give the children safety routines for school, regular fire drills are held during the school day. The fire department conducts annual drills and inspections, usually at the beginning of the school year.

d) Earthquake Drill

The children are familiar with and practice specific routines for earthquake emergency.

Because our school is located in an earthquake prone area, we want to remind you that, in the event of an earthquake, the following procedures will be followed:

- No student will be dismissed from the school unless a parent (or guardian designated by the parents) comes for him/her.
- No child will be allowed to leave with another person, even a relative or babysitter unless we have written permission to that effect or that particular person is listed on the student's emergency form. With this in mind, if your child's form is not up to date, please request a new form from our office.
- All parents, or designated guardians, who come for students, must have them signed out at the office or at the alternative Student Release Station at the entrance to the schoolyard. Signs will be posted in front of the church if this alternative location is being used.
- We are prepared to care for children in the event of a critical situation if parents are not able to reach the school. We have a number of people with first aid certificates, and will be in communication with local emergency services.
- Each classroom is equipped with an Earthquake/First Aid Emergency Kit.
- We do ask for your help in the following areas:
 - Please do not call the school; we must have the lines open for emergency calls.

- Following an earthquake or other emergency, do not immediately drive to the school; streets and access to our school may be cluttered with debris; the school access route and street entrance areas must remain clear for emergency vehicles.
- Turn your radio to **CKNW – 980** or **CISL – 650 on the AM dial**; information and directions will be given over the radio.

e) Lockdown and Building Evacuation Procedures

The CISVA and The Ministry of Education now require schools to organize specific safety procedures in the event that there is a crisis. These measures are designed to keep our children safe and calm. The safety of our students, faculty and staff is our utmost priority. While we always hope that these incidents never occur, we still must be prepared.

Several times during the year, we will practice the lockdown drill at St. Paul School. Prior to this drill, teachers will discuss with their students this procedure in an appropriate manner that informs the children but does not alarm them.

In the event of an emergency incident during the school day, St. Paul School has specific plans in place to keep students, teachers, other school personnel and visitors safe.

If an incident occurs, school officials will be in constant communication with emergency personnel. From that point, officials determine if we might be in a line of danger and then a lockdown order will be issued.

During the **lock down** procedure, (used to protect people inside a facility from a dangerous external threat), all students and other school personnel would be moved into the nearest parish building. The doors to the building would be locked and no one would be allowed to enter or leave.

Although you may feel compelled to pick up your children from school at that time, we want to assure you that your children will be cared for during the lockdown. Allowing anyone to enter or exit the building during this time could expose the children and everyone else inside to a potentially dangerous situation.

In the event of a lock down, once school officials receive word from emergency personnel that the danger has passed, the lock down would be lifted and the process of student release will begin.

Suggestions for parents during a time of a crisis:

1. To ensure safety for all concerned, please do not come to the school site with the intent of picking up your child, nor enter the property during the lockdown.
2. Keep informed by listening to **CKNW – 980** or **CISL – 650 on the AM dial** radio stations or consult the website **www.stpaulschool.ca**.
3. Please do not call the school as staff will need to communicate with emergency personnel.
4. As appropriate, you will be called as soon as possible and there will be a designated place for parents to pick-up students.

Our children are our most valuable asset. You have entrusted us with the safety of your children. These safety procedures are part of that commitment. In an effort to provide an environment that is safe and conducive to education, your support and involvement is appreciated. If you have any concerns or questions about this process, please contact Ms. Moorehead at 604-277-4487.

f) School Closure

In the event of an Early Morning School Closure please see Appendix B at the end of this Handbook.

If the school needs to be close during the day you will be notified by the school. It is always a good idea to check our web-site for any updates or messages. **www.stpaulschool.ca**

Such decisions are always made with the safety of the children in mind, however, since it is very difficult for us to judge the local residential streets, please feel free to make your own decision about sending your children to school during inclement winter weather.

If it should snow heavily during school hours, parents may pick-up their child(ren) at anytime. School will remain open until all the children have been dismissed.

D. SCHOOL REGULATIONS AND EXPECTATIONS

1. EXPECTATIONS FOR STUDENTS

- ❖ To arrive punctually, attend regularly, and behave appropriately.
- ❖ To come prepared for all school requirements.
- ❖ To be considerate of the rights of others: peers, staff, neighbours
- ❖ To make a sincere, concentrated effort to do “YOUR PERSONAL BEST EFFORT”
- ❖ To respect and to comply with school regulations.
- ❖ To participate attentively and reverently in all religious observances.

2. DISCIPLINE

Each teacher develops a system for monitoring homework and student behaviour following the St. Paul School Discipline Policy (Appendix F). Teachers will explain their classroom procedures for discipline at our annual “Meet the Teacher Night.” Although the expectations for students are consistent throughout the school, consequences may vary dependent upon the child’s age, the offence and the circumstances of the offence. Depending on the seriousness of an incident, the parents may be phoned immediately.

3. HARASSMENT AND BULLYING PREVENTION

Rationale: The purpose of this policy is to promote a pro-active and consistent approach and to create a climate in which all children are valued and feel comfortable and safe.

Our Goals: Here at St. Paul School every person has a right to feel safe. Anyone who bullies another is denying them that right. The school will not tolerate any action that undermines a person’s right to feel safe, and it will take whatever steps necessary to stop such behaviour. Therefore our goals are:

To promote a secure and happy environment free from threat, harassment and put-down behaviour and where Christian values and attitudes are nurtured.

To show commitment to overcoming bullying by practicing zero tolerance.

Preventing Bullying at St. Paul School: Strategies to prevent bullying will only be effective when placed within the context of our Catholic culture where respect for all others, made in God’s image, is consistently taught and demonstrated in every aspect of school life. Christian values, which represent the antithesis of bullying, must be continually affirmed in words and actions.

Appointed School Official (ASO) for Harassment & Bullying Prevention for St. Paul School is Ms. Maureen Moorehead and alternate ASO is Mrs. Karen Jew.

Strategies to Prevent Bullying:

Through religious education, liturgies and assemblies the value of the individual person will be affirmed and the qualities of compassion, kindness, reconciliation, tolerance, respect and justice are upheld and encouraged.

Extend this teaching of values across the curriculum to include teaching specifically related to bullying in appropriate curriculum topics.

The students need to hear from adults very clear statements about the unacceptability of bullying behaviours.

Teach more positive ways of resolving conflict.

Provide support for teachers and parents through information seminars and workshops.

Action:

The school will keep adequate records of all bullying incidents.

The school will work with the parents of the victim to assist their child to avoid being bullied in the future.

The school will initially assist the bully to change his/her behaviour.

Resistance to behaviour change and repeated offending will lead to consequences ranging from detention to missing out on special events or fieldtrips.

The school will access community resources designed to assist families and schools as needed.

The school will work with the parents of the bully to establish joint strategies for behaviour modification.

4. STUDENT SUSPENSION/EXPULSION POLICY

Students can be required to be absent from school when a gross misconduct has taken place or when several major misconducts have occurred. Such behaviours will be documented and consequences will be applied according to policy. This absence is termed a suspension and may occur for the following offences:

- 1) Habitual behaviour which makes it difficult for fellow students to learn.
- 2) Flagrant disrespect for teachers or students.
- 3) Personal habits regarding the abuse of substances such as alcohol, nicotine and other drugs which set an example which is foreign to our expectations and
- 4) Disregard for standards regarding dress, attendance and punctuality.

Please refer to Appendix D for the CISVA Suspension and Expulsion Policy

E. SCHOOL SCHEDULE AND GENERAL INFORMATION

1. WEEKLY SCHEDULE

Grades K to 7 Bell times are:

- 8:45 Morning classes begin
- 10:15 – 10:30 Recess/snack break
- 12:00 Lunch
- 12:45 Afternoon classes begin
- 3:00 Dismissal

Please note: **Wednesday**

- 2:00 Dismissal

Supervision begins at 8:30 am. Please ensure your child is picked up as soon as possible after the daily dismissal time. If for some unexpected reason you are delayed, please call the school to let us know.

2. ABSENTEEISM

If your child is going to be absent due to illness, an appointment, or a vacation that is less than one week, please **email BOTH** the classroom teacher and the office. If your child is going to be away on an **extended absence for longer than one (1) week**, please **email the classroom teacher, the office, AND Ms. Moorehead**. For ease of email tracking, kindly type under subject: Your child's grade then name (day and date of absence) (example: Grade 2 – Jane Smith (Friday, Sept. 12))).

If your child is reported absent and we have not received your call, we will call your home and/or place of work to verify your knowledge of the absence. If your child is at home sick, please contact the classroom teacher for work missed. If your child is unable to fully participate in all school activities, he/she should remain at home.

An extended absence for illness should be explained by a physician's letter with a note.

Policy for Vacations during School Time

Absences for reasons other than illness must be kept to a minimum. (Please schedule holidays during school breaks.) Loss of school time may jeopardize the child's year and usually results in missing new concepts taught during his/her absence. Permission to take a child out of school for 5 or more instructional days must be sought from the Principal before arrangements are made.

It is the responsibility of the parent to ensure that any class assignments missed during your absence are attended to upon your return. Further, it will not be expected that the teacher provide you with materials prior to your holiday.

In order to receive the government grant a child must be in attendance for a specified number of days during the year. If a child were to miss too many days due to holidays this could jeopardize reception of the grant, in which case the parents would be held responsible to pay the balance.

A student, who, because of vacation or reasons other than illness, is in attendance for less than 600 hours, will qualify for only partial funding. Parents will be invoiced at the end of the year to make up any loss in funding for such students.

3. CARE OF BOOKS AND PROPERTY

All notebooks, binders, textbooks and library books should be treated with care. The school provides non-consumable textbooks for the students; however, families will be required to compensate the school for any lost or destroyed text or library books. All texts and student planners should be returned to school each day. School bags must fit easily into lockers.

4. SCHOOL UNIFORMS - Top Marks Uniform Company

St. Paul Girls' Uniform	St. Paul Boys' Uniform
Golf Shirt (white, crested, short or long sleeve)	Golf Shirt (white, crested, short or long sleeve)
Tunic (girls, grades K-3, St. Paul tartan)	Boys dress pants (navy blue)
Kilt (girls, grades 4-7, St. Paul tartan)	Dress shorts (navy blue, optional) <i>**not permitted between Thanksgiving and Spring Break.**</i>
Girls dress pants (navy blue, optional) <i>**only permitted between Thanksgiving and Spring Break.**</i>	
Gym strip * T-shirt (white, crested) *Shorts (navy blue) * Running shoes with non-marking soles. (Preferably white).	Gym strip * T-shirt (white, crested) *Shorts (navy blue) * Running shoes with non-marking soles. (Preferably white).
Sweater (royal blue, crested) style optional: *Buttoning Cardigan *V-neck	Sweater (royal blue) style optional: *Buttoning Cardigan *V-neck
Socks: Dark Blue in colour. Over the calf (just below the knee) or tights.	Socks: Dark Blue in colour. Dress or crew socks. (No ankle or no-show socks permitted.)
Shoes: All black shoes with good support. No sandals, no heels, no boots or ankle boots.	

Accessories: Please keep accessories simple and discreet. No jewellery except small studs for pierced ears.
Hair accessories should match the uniform. No make up or nail polish.

KINDERGARTEN: Same as above. For gym class, all Kindergarten children will wear their regular school uniform with running shoes. For the sake of modesty, girls should wear shorts or leotards underneath their tunics.

5. LOST AND FOUND ARTICLES

Please see that all of you child's books and clothing (boots, raincoats, gym shorts, etc.) are clearly labelled with his or her name.

Lost or misplaced articles may be claimed in our 'Lost and Found' area at the foot of the back stairway.

Please do not allow your child to bring valuable personal items (CD, Gameboy, etc.) to school.

6. COMMUNICATION FROM SCHOOL

A calendar listing school events will be available on the school web site. A regular Thursday Letter will be emailed home each Thursday with updates, reminders, and information from the school.

7. HOMEWORK POLICY

The sequential time allotment (average time per evening) is:

Grade One: 15 minutes

Grade Two: 15 – 30 minutes

Grade Three: 30 – 45 minutes

Grade Four: 30 – 45 minutes

Grade Five: 45 – 60 minutes

Grade Six: 60 – 90 minutes

Grade Seven: 60 -120 minutes

The above times may vary due to a number of factors.

8. LINES OF COMMUNICATIONS AND COMPLAINT PROCEDURE

Our goal as a staff is to be as helpful and supportive to parents as possible. Any problem, which occurs at school, needs to be handled at school. If your child is experiencing difficulties either at home, in the classroom or on the playground, please let us know as soon as possible.

Normal channels of communication are:

- Speak to the child's teacher first. It is the classroom teacher who spends most time with your child and will be most familiar with the situation.
- Speak to the principal if the problem involves the school at large or if you do not feel satisfied that your concern has been acted upon or understood by the classroom teacher.
- If you are still dissatisfied with how your concern has been handled, make a formal complaint in writing to the Education Committee.

Please refer to Appendix C for the CISVA Complaints Policy

9. ADMISSIONS

There is an admission committee consisting of the pastor, principal and a P.E.C. member(s). Families are accepted in the following order of priority as outlined in CISVA Policy.

- Children presently enrolled in the school if they and their families meet the expectations of the school.
- Siblings of children already in the school, whose families are practising Catholics active in the parish.
- Children whose families are practising Catholics active the parish.
- Siblings of children already in the school, whose families are practising Catholics active in other parishes.
- Children whose families are practising Catholics coming into the parish, who have been attending Catholic school elsewhere.
- Children whose families are practising Catholics active in other parishes.
- Children whose families are either not practising Catholics or not active in their parishes.
- Once accepted into the school, non-Catholics need to meet only the criteria expected of the other students to be readmitted in subsequent years. Siblings of non-Catholics cannot be given priority over Catholics.

10. YEARLY FEES

A. Tuition Rates for the school year 2018-2019

The table below summarizes the school's monthly tuition rates for the **2018-2019** school year.

<u>Family</u>	<u>Category 1</u>	<u>Category 2</u>	<u>Category 3</u>
One Child	\$ 290.00	\$ 366.00	\$ 466.00
Two Children	\$ 453.00	\$ 588.00	\$ 688.00
Three or More Children	\$ 547.00	\$ 706.00	\$ 806.00

Definitions:

Category 1 – Catholic Family is an active and participating member of St. Paul Parish

Category 2 – Catholic Family is a registered only member of St. Paul Parish OR

Category 3 – Catholic Family is a member of another Catholic Parish
or - Family is non-Catholic

For the purposes of admission to the school, you belong to Category 1 if your family:

- Is registered in this parish.
- Regularly attends Sunday Mass at this parish.
- Uses weekly envelopes from this parish on a regular basis.
- Participates in the work activities required of you by this parish.

B. Activity Fee

This fee is paid annually per student and covers consumable books and some class activities/field trips.
\$75.00 for primary and **\$85.00** for intermediate.

C. Participation Program and Fee

St. Paul School has a Parent Participation Program that allows us to keep many of our annual costs at a minimal level. **All families are expected to participate in the various activities of the school including Fundraising.** In addition, our school has a scheduled Parent Participation Program where families take part in an activity on a set schedule. [e.g. Bingo, playground supervision, library help, etc.]

All parents whose children have attended St. Paul School for a period of four years or less, can expect to be assigned to BINGO. All questions and inquiries may be made in writing to the team captain of Parent Participation on the PEC. This individual will bring the written communication forward to the next scheduled PEC meeting (usually the second Tuesday of each month) for discussion and resolution by the PEC.

Due to personal circumstances, families may choose to be exempt from this program by making a Participation Payment of **\$2,500.00** annually. It is necessary when completing the Parent Participation Form to state clearly your intention for each school year.

If you choose to participate as scheduled, a participation deposit of **\$250.00** per family is payable upon acceptance into the school. If the requirements of participation are not fulfilled you will forfeit the deposit. If all participation requirements are met each year this deposit is carried over to the next year and refunded when your family leaves the school.

- * Re-Registration Fee **\$50.00** per family (Non-refundable).
- * New Registration Fee **\$50.00** per child (Non-refundable).

11. PARENT PARTICIPATION

The Parent Participation Program plays an integral part in the operation of St. Paul School. Because of the program, we are able to generate income for the school, as well as provide extras for our students. A secondary aim of the program is to create a spirit of community among the families working to create a better St. Paul.

Areas of participation and team captains are as follows:

Parent Participation – Mr. Mark Acosta & Mr. Trevor Henry	pec@stpaulschool.ca
Supervision – Ms. Maureen Moorehead.....	mmoorehead@stpaulschool.ca
Maintenance - Mr. Kelsey Mah	pec@stpaulschool.ca
School Aides - Ms. Maureen Moorehead	mmoorehead@stpaulschool.ca

It is your responsibility to find a replacement if you cannot attend your work area. Each team has been provided with a list of phone numbers for its convenience.

12. DROP OFF AND PICK UP PROCEDURES

- The north driveway to the roundabout from St. Albans Road is for drop off and pick up only.
NO WAITING IN THIS AREA.
- The south entrance is available for parking or pick up and drop off. Please follow the arrows on the pavement. If you must wait please park in designated parking stalls rather than along the driveway.
- The back parking lot is a play area for the children and is closed to vehicles during school hours.

13. LUNCHES AND CLASSROOM DELIVERIES

If on the rare occasion that you **MUST** bring lunch or some other item, please bring it to the office. We will see that it is delivered.

14. NO SMOKING POLICY

New Legislation was introduced on March 6, 2007 (Bill 10, the *Tobacco Sales Amendment At, 2007*) – Banning Tobacco, smoking and the use of vapour products in Public Places and Schools. As of October 17, 2018, the Tobacco Control Act requires that all school in B.C. are smoke-free environments for students, staff, and visitors. Therefore, smoking and the use of vapour and cannabis products is banned on St. Paul school property as indicated by signage posted at main entrances and throughout the building.

APPENDIX "B"

GENERAL SCHOOL ADMINISTRATION

FAMILY STATEMENT OF COMMITMENT 411

Rationale

"Motivated by a Christ-centered vision of humanity and human history, our school promotes the formation of the whole person. Such formation embraces not only intellectual, but also physical, emotional, moral and spiritual dimensions of human growth. Intellect, emotions, creative ability and cultural heritage have a place in the life of the school. Human knowledge and skills are recognized as precious in themselves, but find their deepest meaning in God's plan for creation." From PHILOSOPHY OF EDUCATION FOR CATHOLIC SCHOOLS IN THE PROVINCE OF B.C. by Catholic Bishops of B.C.

Policy

All families will be required to complete a Family Statement of Commitment. Partners (home, school, parish) in Catholic Education must work together to provide an environment where faith and learning go hand in hand leading the young people to be the best they can be.

Procedure

The philosophy of our Catholic school expresses the teaching and practice of the Roman Catholic Church and must be supported by all members of the community. Please read the following statements carefully. They ask you to make a commitment to the values and ideals of our school community. If you have any questions or concerns regarding this commitment form, please bring them to the Principal, Pastor or the Chairperson of the Education Committee who will gladly discuss them with you. By returning the signed statement with your completed application, you accept the responsibility of this commitment.

FAMILY STATEMENT OF COMMITMENT

1. Parents and guardians agree that they and their families will exhibit conduct consistent with Catholic denominational standards. The determination of whether any conduct contravenes these standards is the right of the Board of Directors of the Catholic Independent Schools of Vancouver Archdiocese.
2. All students are required to participate in our religious education curricular and co-curricular programs including liturgical celebrations, retreats, prayer, etc.
3. Parents/Guardians are expected to support the teachings on faith and morals in the Religious Education Program and participate in the program as required by the school.
4. Regular school attendance and full participation in all aspects of the academic program of the school are required of every student. Each student is expected to strive toward the development of his/her full academic potential.
5. Each family is expected to support and participate in the fund-raising activities of the parish/school. This means each family shares in the responsibility of educating our Catholic children.
6. Each student is expected to know and follow school policies on behavior.
7. Parents/Guardians are expected to know and support school policy and procedures.
8. Parents/Guardians are expected to attend at least one orientation session which will focus on the philosophy and goals of our school.
9. Parents/Guardians agree to accept the responsibility for the cost of tuition, supplies and other school activities.
10. If any of these conditions are not met the school reserves the right to: refuse admission, or remove the student from the school.

Please sign both copies. Keep one and return the other with your application. I have read and understand the above expectations and commitments and I hereby accept them as stated.

Parent/Guardian Signature: _____

Student Signature: _____ (Secondary School)

Date: _____

Reference:	Approved: Board of Directors
	Date Approved: November, 1996
Cross-reference: Policy 403 – Application/Re-registration Elementary Policy 404 – Application/Re-registration Regional HS Policy 424 - Volunteers	Date(s) Revised: April 6, 2010

APPENDIX "B"

EARLY MORNING SCHOOL CLOSURE PROCEDURE

In the event of an early Morning School Closure, information will be sent to you using the following procedure:

1. A decision will be made as early as possible.
2. Choose one of the following radio stations to listen for an announcement about St. Paul School:
 - CISL – 650 AM
 - CKNW – 980 AM
3. You will receive an email from the principal or office between 6:00am to 7:00am.
4. Check our website <http://stpaulschool.ca> or stay tuned to the radio for any further messages.

Please do not call the Parish for school information.

APPENDIX "C"

COMPLAINTS POLICY



HUMAN RESOURCES

MAJOR COMPLAINTS POLICY 302

Rationale

The CISVA Board recognizes that in a Catholic school parents, students, teachers and support staff form an integral part of the Christian school community. From time to time, issues may arise where members of the community may differ in their perspectives.

Policy

Within the CISVA all complaints must be dealt with in a timely manner. Each member of the community is expected to follow the appropriate complaint procedure as described below. All parties involved must maintain confidentiality with respect to all aspects of this procedure.

Procedure

1. The issue must be dealt with first by the persons directly involved.
2. If the issue cannot be resolved the matter must be brought to the attention of the Principal of the school.
3. The Principal will clarify the issue of disagreement and document all matters pertaining to the issue and its resolution.
4. Determine what policy/policies of the school or CISVA can be applied to resolve the issue. If necessary, advisers might include the Pastor, Chairperson and a representative from the Superintendent's Office etc., to help provide a resolution to the issue.
5. The Principal having made a judgment to resolve the issue shall promptly notify both parties of the resolution in writing. In this written notification, the parties must be informed of the available appeal procedures.
6. If the Principal's resolution is not accepted, the matter may be appealed to the Education Committee. The appeal must be submitted in writing no more than seven days after the Principal's decision has been received.
7. Upon receiving the complaint, the Education Committee will form a subcommittee with authority to make a decision regarding the appeal. This committee must always include the school's Pastor/Archbishop Representative. The subcommittee will study the documentation and then call a meeting to hear presentations from the complainant and the Principal. Both parties will be in attendance and be given the opportunity to respond.
8. After this, the subcommittee shall, in camera, present its *decision* to the Education Committee. The Education Committee will ratify the decision and take the steps necessary to implement the decision. If the resolution requires disciplinary action, the Education Committee must consult with the Superintendent before implementing the recommended action. The Education Committee may reject the sub-committee's decision only if there is a serious flaw in the procedures of the appeal process. At that time, the Superintendent must be notified and a decision will be delayed until the Education Committee receives direction from the Board of Directors.

9. The Education Committee shall notify the appellant, and the principal, of its decision within seven days of the meeting. The decision shall be communicated in written form.
10. When the complaint is about the Principal, the process should start at #1. However, if there is no resolution at the end of this, the process should skip to #6 and following.
11. The Board of Directors may consider an appeal of the Education Committee's decision for reasons that the Board considers valid and appropriate. The Board of Directors reserves the right to resolve the issue through investigation or through the formation of an appeal committee. The appellant must prepare a written submission to the Board detailing the reasons. This submission must be delivered to the Superintendent's Office no later than fourteen days after the Education Committee's decision.
12. If the decision of the Board of Directors is not acceptable, the appellant may request an Independent School Ombudsperson to review the appeal. The names and contact information of the current Independent School Ombudspersons shall be obtained from the Superintendent of the CISVA.
13. The procedure and scope of the Independent School Ombudsperson's review shall be communicated to the appellant by the Superintendent.
14. The outcome of the Independent School Ombudsperson's review shall be communicated to the appellant by the Superintendent.
15. The Board of Directors will communicate its final decision to all parties involved.
16. Requests for extensions of the timelines mentioned in the policy, will, for valid reasons, ordinarily be approved.

Reference:	Approved: Board of Directors
	Date Approved: March 1, 2005
Cross-reference: Policy 426 – Suspensions and Expulsions	Date(s) Revised: February 5, 2008

APPENDIX "D"

SUSPENSIONS AND EXPULSIONS



HUMAN RESOURCES

SUSPENSIONS AND EXPULSIONS 426

Rationale

Students can negatively affect the school's learning environment and therefore the ability of all classmates to receive the education to which they are entitled. Both the quality of instruction and the learning process are dually maintained by making it clear to disruptors, through the use of suspensions, that unruly behaviour will not be tolerated.

Policy

Suspension shall be recognized as an effective tool to encourage and enforce self-discipline and appropriate behaviour.

Expulsion shall be used when the continued presence of the student at the school is either a threat to the staff and students or an impediment to either the quality of instruction or the learning process.

Procedure

1.1 In the normal operation of a school, instances may arise in which a student commits a serious infraction of school or CISVA policy. This serious infraction may lead to the student's being suspended or expelled from the school. When dealing with such matters, schools are required to act for the protection of all members of the school community.

1.1.1 An expulsion is usually preceded by a suspension, during which the student is denied the privilege of attending school and all school-related activities. Suspension from school is considered to be a serious penalty for behaviour which, if continued, would ultimately result in an expulsion.

1.1.2 The Principal is required to investigate fully every serious infraction to the best of his/her ability and is required to maintain documentation that accurately records the incident and the investigation. This documentation would be used to support the school's decision to suspend and/or expel.

1.1.3 A suspension is decided upon by the Principal or Vice-Principal only after thorough investigation. The length of the suspension must fit the severity of the infraction. No student shall be suspended for a period exceeding one school day without prior consultation between the Principal or Vice-Principal and the Pastor/Archbishop's Representative and/or the Chairperson of the Education Committee. A written notification of suspension must be given to the parents or guardians. The letter must contain the school's expectations of the student if re-admission to the school is granted.

1.1.4 If the Principal has determined that the incident is serious enough to warrant expulsion, the Principal must immediately consult the Pastor/Archbishop's Representative and the Education Committee Chairperson. During this consultation period, the student will be suspended. After the consultation, the Principal will make his/her decision about the expulsion and inform the student's parents or guardians, either in person or by telephone.

1.1.5 Appropriate arrangements must be made for the student to leave the school. A written notification must be given to the parents or guardians within twenty-four hours of the expulsion.

1.1.6 Parents may appeal a suspension or expulsion decision. (See Policy302 – Complaint Policy)

1.2 THE APPEAL OF AN EXPULSION

When an appeal of an expulsion is brought to an education committee, an appeal sub-committee will be appointed to hear the case. The decision to overturn the expulsion must be based on one or more of the following points:

1.2.1 Did the student commit the infraction he/she is accused of?

1.2.2 Is the infraction covered by policy and does the policy require or allow expulsion?

1.2.3 Is the policy being applied properly? (The wording in some policies is intentionally broad, e.g. gross misconduct. Was this infraction intended to be considered gross misconduct?)

1.2.4 Has the school followed its own and Archdiocesan policy regarding the handling of the expulsion? (proper notification in writing, time lines, etc.)

1.2.5 At the appeal the principal and the appellant will present their case addressing 1.2.1, 1.2.2, 1.2.3 and 1.2.4 in writing with any necessary documentation.

Reference: Procedural Fairness, Best Practice Guidelines for Independent Schools	Approved: Board of Directors
	Date Approved: Pre-1996
Cross-reference: Policy 302 - Complaints	Date(s) Revised:

APPENDIX "E"

HARASSMENT AND BULLYING

Definition of Bullying (as per CISVA Policy 408)

“Bullying is a pattern of repeated actions targeted at a person in a deliberate manner, intended to reduce the perceived power that person has over the situation or to harm that person.” All acts of bullying have the characteristics of being dehumanizing, intimidating, humiliating, threatening, and evoke fear of physical harm or emotional distress in the person being targeted.

Bullying encompasses a wide range of behaviours within a relationship between a dominant and a less dominant person or group where:

- an imbalance of the perceived power is manifested through aggressive actions
- repeated physical or psychological (verbal and social) abuse occurs
- continuous and targeted negative interactions occur either directly (face-to-face) or indirectly (gossip, exclusion)
- repeated and directed negative actions occur with intent to harm, which can include some or all of the following:

i. **Physical actions**

Physical actions are described as punching, kicking, biting and initiating unwanted actions intended to hurt the person’s body, damage belongings or make the person feel badly about himself or herself;

ii. **Verbal actions**

Verbal actions can take the form of threats, name calling, insults, racial and cultural slurs or inappropriate jokes and/or comments. Also includes sexual harassment such as when a person or group hurts another person by taunting or discussing sensitive sexual issues, creating sexual rumours or messages, and making derogatory comments on a person’s perceived sexual identity;

iii. **Social exclusion**

Social exclusions can manifest itself in such actions as spreading rumours, gossiping, and targeted physical exclusions.

iv. **Cyber bullying**

Cyber bullying can be defined as the use of Information and Communication Technologies (ICT), particularly social media websites, mobile phones, text messages, photographs, the internet, or email, deliberately to upset or target someone else. It can be an extension of face to face bullying, providing the bully with anonymity. It is important that awareness is raised of this type of bullying and that there is an understanding of what cyber bullying is and how it differs from other forms of bullying. It is important that, as with all issues of bullying, this issue is dealt with sensitively.

There are action areas that may help in the prevention of cyber bullying: -

- Understanding and talking in both home and at the school about what cyber bullying is
- Promoting the positive use of technology both in schools and at home –
- Evaluating the impact of prevention activities and adjusting as needed

For resources on Harassment and Bullying Prevention, see school administration.

APPENDIX "F"

PERSONAL INFORMATION PRIVACY POLICY FOR PARENTS AND STUDENTS

The School's Commitment to You

Safeguarding your confidentiality and protecting your personal information is a fundamental concern of St. Paul School. The school is committed to meeting or exceeding the privacy standards established by the BC **Personal Information Protection Act (PIPA)**.

This personal information privacy policy is intended to explain to you the current legislation which is designed to protect your privacy, to regulate the use and collection of information, and to state the steps the school has taken to ensure your personal and financial information is handled appropriately and securely.

Privacy Protection in British Columbia

The Act requires an organization to obtain informed consent from an individual before collecting personal information about that individual, with certain exemptions. The organization must state why it is collecting the information, and how it will use the information collected. The Act also requires the organization to keep the information it has collected in a secure and safe manner, protecting the individual's right to have his or her information protected. The Act also describes with whom the personal information may be shared.

Note: St. Paul School does not fall under the **Freedom of Information and Protection of Privacy Act (FOIPPA)**, which applies only to provincial government and its bodies; neither does it fall under the **Protection of Personal Information and Electronic Documents Act (PIPEDA)**, a federal statute.

Ten Privacy Principles

As part of St. Paul School's commitment, the following Ten Privacy Principles govern the actions of the school as they relate to the use of personal information. These principles have been built upon the values set by the Canadian Standards Association's Model Code for the Protection of Personal Information and British Columbia's Personal Information Protection Act (PIPA).

Principle 1 – Accountability

St. Paul School is responsible for maintaining and protecting the personal information under its control. In fulfilling this mandate, the school designates an individual(s) who is(are) accountable for the school's compliance with the Ten Privacy Principles. This individual is the Privacy Officer of the school.

Principle 2 – Identifying Purposes

St. Paul School will identify the purposes for which personal information is collected before or at the time the information is collected.

Principle 3 – Consent

St. Paul School will obtain consent of the individual for the collection, use or disclosure of personal information except where the law states exemptions, grants permission, or creates a requirement for collection, use, or disclosure of personal information.

Principle 4 – Limiting Collection

St. Paul School will limit the personal information collected to those details necessary for the purposes identified by the school.

Principle 5 – Use, Disclosure and Retention

St. Paul School will only use, disclose and retain personal information for the purpose for which it was collected unless the individual has otherwise consented, or when its use, disclosure or retention is required or permitted by law. Personal information will only be retained for the period of time required to fulfil the purpose for which it was collected.

Principle 6 – Accuracy

St. Paul School will maintain personal information as accurate, complete and up-to-date form as is necessary to fulfil the purposes for which it is to be used.

Principle 7 – Safeguarding Personal Information

St. Paul School will protect personal information by security safeguards that are appropriate to the sensitivity level of the information.

Principle 8 – Openness

St. Paul School will make information available to individuals concerning the policies and practices that apply to the management of their information.

Principle 9 – Individual Access

St. Paul School will inform an individual, upon the individual's request, of the existence, use and disclosure of the individual's information, and shall give the individual access to it in accordance with the law. Individuals may verify the accuracy and completeness of their information and may request that it be amended, if appropriate.

Principle 10 – Complaint Process

Individuals may direct any questions or enquiries with respect to the school's privacy policies or practices to the Privacy Officer of St. Paul School, Ms. Maureen Moorehead, Principal.

What Information is Collected?

St. Paul School gathers and uses personal information to provide your child with the best possible educational services enunciated by the Mission statement of the school. Most of the information the school collects comes to the school directly from you, and only with your consent. When you apply to register your child the school will ask you to provide the information that enables it to complete the registration process. This also includes information on academic, health, and personal matters needed by the school to provide the best possible education and co-curricular programs.

How is Information Used?

St. Paul School, uses

- personal information to communicate with you, process applications and ultimately to provide you and your child with the educational services and co-curricular programs you expect.
- personal information to enable the school to operate its administrative function, including payment of school fees and maintenance of non-educational school programs including parent and volunteer participation and fundraising.

- anonymous/personal information to constantly improve our school, e.g., surveys.
- health, psychological, or legal information to provide certain specialized services in those areas or as adjunct information in delivering educational services.

If for any reason personal information is required to fulfil a different purpose, the school will notify you and ask you for your consent before the school proceeds.

When May Information be Disclosed?

St. Paul School, keeps personal information strictly confidential and treats it with care and respect. However, some of an individual's personal information may be shared with others as noted below.

When Authorized by You

- Other educational institutions routinely contact the school for personal information about students. For example, if your child moves to another school, college or university, student records are requested by the enrolling institution. Your permission to pass on these records is usually obtained when you register your child and authorize the school to disclose such information to other appropriate educational institutions for the ongoing education of your child.
- Contact information may be used to enable the school to provide the para-educational and administrative services usually operated by the school. These services include phoning committees, participation groups, parent meetings, fundraising, events, annual general meetings, etc.

In some cases, when communication is over the telephone, your consent to the use and/or disclosure of your information will be obtained verbally. In other cases such as when you communicate through e-mail, your consent will be obtained electronically.

When Required by Law

The type of information the school is legally required to disclose most often relates to family court issues, legal proceedings, court orders and government tax reporting requirements. Student information as per Form 1701 is annually filed with the Ministry of Education.

Only the information specifically requested is disclosed and the school takes precautions to satisfy itself that the authorities making the request have legitimate grounds to do so.

When Permitted by Law

The school is legally permitted to disclose some personal information in situations such as an investigation of illegal activities, reasonable methods to collect overdue accounts, a medical emergency or suspicion of illegal activities etc. Only pertinent information is disclosed.

The school does not sell, lease, or trade information about you to other parties.

The School's Employees

In the course of daily operations, access to personal information is restricted to authorized employees who have a legitimate reason for accessing it. For example, teachers will have access to personal information about your child but not your account with the school.

All employees of St. Paul School are required to abide by the privacy standards governed under PIPA. They are also required to work within the principles of ethical behaviour as set out in employment contracts and must follow all applicable laws and regulations. Employees are well informed about the importance of privacy and they are required to sign either a code of conduct or a confidentiality agreement that prohibits the disclosure of any

personal information to unauthorized individuals or parties. To reinforce their understanding and commitment to upholding client privacy and confidentiality, employees periodically receive up-to-date literature about our privacy policy, principles and standards.

Outside Service Suppliers

At St. Paul School, the school sometimes contacts outside organizations to perform specialized services such as printing, student assessments, market research or data processing. For example, the school gives its yearbook publisher the information required to produce the annual yearbook. Suppliers of specialized services are given only the information necessary to perform those services.

Restricting Sharing Information

If you choose to limit the sharing of your personal information, please contact the school office and submit a written letter specifying which items of personal information you wish to limit, and to whom you wish these items to be restricted. Please remember that certain agencies, by law, have access to certain types of personal information.

How Does The School Safeguard Information?

St. Paul School, maintains current security standards to ensure that your personal and financial information is protected against unauthorized access, disclosure, inappropriate alteration or misuse.

Student Files

Student files are stored in secured filing cabinets. Access is restricted to only those employees (teachers, teacher-aides, counsellors, secretaries, etc.) who, by nature of their work, are required to see them.

Electronic Security

The school manages electronic files appropriately with passwords and security measures that limit access by unauthorized personnel. The school's security practices are reviewed periodically to ensure that the privacy of your information is not compromised.

Record Management

Personal information is destroyed one year after the school no longer needs the information or one year after legal minimum retention requirements have been met.

Accessing and Amending Information

St. Paul School, makes decisions based on the information it has. The school makes every effort to ensure information is accurate and complete.

Accessing Your Information

You may access and verify any of your personal information with appropriate notice so that the office is able to supply you with the information you require. Most of this information is available in the registration forms and other forms that you filled out.

Accessing Student Information

You may access and verify school records of your children, with appropriate notice during normal school hours. In situations of family breakdown, the school will grant access to records of children as determined by judicial review. (High schools may wish to develop policy on access by students to their own records.)

Amending Your Information

To help the school keep your personal information up-to-date, the school encourages you to request the school to amend inaccuracies and make corrections. Where appropriate, the school will communicate these changes to other parties who may have unintentionally received incorrect information from the school.

Questions, Concerns and Complaints

The school may add, modify or remove portions of this policy when it is considered appropriate to do so. You may ask for the most recent update of this policy at the school office.

Questions, concerns, and complaints about privacy, confidentiality and information handling of the school may be addressed to the school's Privacy Officer by calling the school office. If necessary, you will be referred to use the school's complaint procedure and appeals policies.

APPENDIX "G"

SCHOOL DISCIPLINE POLICY

Discipline at St. Paul is meant to develop courtesy and respect for the student themselves, their teachers, other adults and their fellow students. The following Discipline Plan highlights behaviours that are not acceptable at St. Paul. The classroom teacher or supervisor will usually handle level 1 behaviours. Level 2 and 3 behaviours are of a more serious nature and may involve the teacher, Principal and/or Vice Principal. A parent will be notified by phone or letter when it is deemed appropriate by either the teacher or the Administration. Consequences for behaviour will be determined by the staff and administration. CISVA Policy 426, Suspensions and Expulsions, may also be referenced and applied.

(a) St. Paul School Discipline Plan

Level 1 Behaviours

• <i>Lying</i>	• <i>Teasing</i>
• <i>Swearing</i>	• <i>Talking loudly in class/out of turn</i>
• <i>Unsafe conduct (minor)</i>	• <i>Lateness (after recess and lunch)</i>
• <i>Lack of respect for supervisors, peer helpers, others, environment, property</i>	• <i>Inappropriate physical contact, touching</i>
• <i>Personal equipment (leave skateboards, roller blades, walkmans, electronic games, and other toys or personal items, at home)</i>	• <i>Physical aggression (pushing, shoving, aggressive contact)</i>
• <i>Washroom during class time (misuse)</i>	• <i>Inappropriate use of uniform</i>
• <i>Assembly/audience behaviour</i>	• <i>Homework (incomplete/not done)</i>
• <i>Cheating</i>	• <i>Food and drink at inappropriate times</i>

Level 2 Behaviours

• <i>Repetitive Level 1 Behaviours</i>	• <i>Bullying</i>
• <i>Inappropriate representation of school (field trips/athletics)</i>	• <i>Disrespecting teachers' personal space and belongings</i>
• <i>Disrespecting other students (chronic)</i>	• <i>Inappropriate internet sites</i>
• <i>Non-compliance with teacher requests (chronic)</i>	• <i>Dangerous objects</i>
• <i>Destruction of property</i>	• <i>Cheating (chronic)</i>

Level 3 Behaviours

• <i>Chronic Behaviours</i>	• <i>Unexcused absence(s)</i>
• <i>Vandalism</i>	• <i>Swearing at teacher(s)</i>
• <i>Drugs, alcohol, cigarettes</i>	• <i>Inappropriate sexual behaviour (major)</i>
• <i>Serious theft</i>	• <i>Blatant defiance</i>
• <i>Violence, fighting, threats</i>	• <i>Fire alarm (pulled when not an emergency)</i>
• <i>Leave grounds without permission</i>	• <i>Matches/Fires</i>
• <i>Serious harassment</i>	• <i>Pornographic or racist materials</i>
• <i>Weapons</i>	

APPENDIX "H"

Media Policy

Media Policy St. Paul School

- The principal is the school's spokesperson and as such is responsible for all communication with the media. If the principal is not available, a designated vice-principal or school chairperson will assume this role.
- All requests for information about the events surrounding the crisis must be referred to the school's media spokesperson.
- No one is required to be interviewed by the media; if the media wants to interview a teacher, the teacher's permission and the principal's permission must be obtained.
- The principal has the right to deny the press interview with staff on the school premises; staff has the right to deny an interview with the media at any time or place.
- If the media arrives uninvited, they will be escorted to the principal's office and the ground rules concerning interviewing staff and students and school routines will be explained as needed.
- The media will not be allowed access to students or to roam hallways or the grounds of the school.
- Normally, the principal will decline any attempts by the media to interview students. If it seems appropriate for a student to speak to the press, parental permission must be obtained in writing. The decision to allow a student on camera should be very carefully considered, weighing all the consequences.
- If a press conference is called, a pressroom will be set up at a site away from the scene of the incident (e.g. local church or office board room.).
- Members of the media will be contacted by phone or fax to inform them of the press conference.
- During the press conference, the principal will read the prepared statement and state when further information will be available.
- Copies of the press release will be made available to all media personnel.
- The name of a young person (as defined by the *Young Offenders Act*) who is alleged to have committed an offence or of a young person who is a victim or witness will not be released to the press unless the school is authorized to do so by the police.
- If there is the possibility of a criminal investigation, a police spokesperson will be responsible for releasing the details of the incident.

Please note that staff cannot control news media access, photos/videos taken by the media or others in public locations (such as field trips or off school grounds) or school events open to the public, such as sports events, student performances, etc. These are considered public events.

APPENDIX "I"

RECOMMENDATIONS FOR E-MAIL AND INTERNET USE

St. Paul School

- Create a list of **Internet rules** with your kids so they know what acceptable behaviour is and what is not.
- **Sit with your kids when they are online** or make sure they only visit sites that you have approved.
- **Keep Internet-connected computers in an open area** where you can easily monitor them and out of the kid's bedrooms.
- **Set parental controls** at the age-appropriate levels and use filtering and monitoring tools as a complement - not as a replacement for parental supervision.
- **Use parental controls** on all Internet-enabled devices such as cell phones, gaming devices, i-pods and pads.
- **Use kid-friendly search engines** or search engines with parental controls.
- You and your children should have the **same e-mail address**. Establish a shared family e-mail account with your Internet Service Provider rather than letting your kids have their own accounts.
This way you can monitor your child's e-mail comings and goings. Monitor the e-mails as you would their incoming phone calls.
- **Insist on access and passwords to your kids' e-mail to make sure that they're not talking to strangers.**
- **Talk to your children about ethical behavior. They should not be using the Internet to spread gossip, bully, send false e-mails or say hurtful things about others.**
- **If your child receives repeated unwanted or hurtful e-mails**, block the account so that the sender will not have access to your son/daughter's account. Report this information to the school and we can effectively deal with the situation before it becomes a bullying or harassment problem.
- **Check the history file** on your computer regularly to see which sites your child has accessed.
- **Encourage your child to come to you if they encounter material or messages that make them feel uncomfortable** or threatened, and remember to stay calm; otherwise, your kids won't turn to you for help when they need it.
- **Limit time online.**
- **Do not allow instant messaging (IM), MSN, chatrooms or social networking sites.**
- **Do not allow your children to have online profiles or pages on social networking sites such as MySpace and Facebook which have a minimum age requirement of 14.** Kids can lie about their age and gain access to these sites. Children of elementary school age do not have the social skills to deal with the complexities of the site.
- **Your children should not post pictures of anyone on line without the person's permission and they are under close parental supervision.**

Sources: Web Aware <http://www.bewebaware.ca/english/default.aspx> Enough Is Enough: <http://www.enough.org/>

Here is a good article to discuss with your child about **ethical behaviour on the Internet.**

Cyber Ethics

Source:

http://www.symantec.com/norton/library/familyresource/article.jsp?aid=pr_cyberethics

Teaching your children acceptable behaviour on the Internet

What is cyber ethics? And how do you teach it to your children? Simply put, cyber ethics is a code of behaviour for using the Internet. One easy way to think about cyber ethics and to address the subject with children is this: **acceptable behaviour on the Internet is very much the same as acceptable behaviour in everyday life.**

For instance, at an early age, children learn what it means to be honest, and to respect the rights and property of others. They are taught to not take what does not belong to them, and to be considerate of others. **On the Internet, the same basic rules apply.**

Dos and don'ts. The difference between using and abusing the Internet.

Here are some helpful dos and don'ts pertaining to situations that children are likely to encounter.

Schoolwork

Do use the Internet to help you do your schoolwork. The Internet is the world's largest library. You can find information on almost any subject from science, math and technology to language, art, history, current events and more. When you use information, photos and other materials that you find on the Internet in your homework or research projects, make sure that you identify the sources of the information in footnotes, just as you would if you used books in your school library to get the information.

Don't copy information from the Internet and call it your own. It is sometimes tempting to copy information from the Internet into your schoolwork, and to present it as your own work. That is dishonest, just like taking someone else's jacket and calling it your own. And it might be illegal, too. Much of the information, pictures and other materials on the Internet is copyrighted, which means it belongs to someone else. If you take it without permission, or without identifying the source in a footnote, you are breaking the law.

Music, video, games and copyrights

Do use the Internet to learn about music, video and games. There are many websites where you can learn about music by listening to sample tracks, preview movie videos, and learn about new computer games.

Don't use the Internet to download or share copyrighted material. When something is copyrighted, it means that someone else owns it, and you cannot copy or distribute it without their permission. It is dishonest and illegal to download copyrighted music, video, games or other materials. It is also dishonest and illegal to share copyrighted music, video, games or other materials over the Internet. When you see this symbol — © — it means that the material is copyrighted.

E-mail and instant messaging

Do use the Internet to communicate with friends and family. E-mail is a fun ways to communicate with your friends and your family. Always make sure that you know the people with whom you exchange e-mail.

Don't use the Internet to communicate with strangers. Do not use e-mail or IM to talk to strangers. They may not be who they say they are, and if they are not, they are not nice people. Don't give out your e-mail address to people you don't know, either online or in person. Don't open e-mail or e-mail attachments from people you don't know. Unsolicited e-mail may contain viruses that will damage your computer and the information on it.

Don't give anyone personal information or passwords. Don't tell people, especially strangers, more about yourself than you would if you met them in person. Don't tell them what you look like, your age, where you live, your phone number, what school you go to, or any passwords that protect your computer or your private information.

For Parents

Don't leave your children unsupervised. Make sure you know what sites your children visit when they're on the internet, and with whom they're communicating. Look over their shoulder. Keep track of the websites they visit. There are websites and programs available that direct children to sites that are fun, interesting and appropriate. And there are others that restrict their browsing to appropriate websites. The best control, however, is parental involvement. Make sure they understand acceptable behaviour on the Internet. And make sure they follow the rules.

Do encourage your children to use the Internet. The Internet has a lot good things to offer children. When used wisely, it is a great tool for information gathering and learning and, via e-mail, for practicing written communication.

In conclusion, a reminder of how parents can help:

- Create Internet rules for their children at home
- Supervise your child when using the Internet
- Keep the lines of communication open and honest
- Model good behaviour online
- Keep the computer in a public place
- Follow the recommendations set out in this letter.

APPENDIX "J"



GENERAL SCHOOL ADMINISTRATION SPECIAL EDUCATION 421

Rationale

The Catholic school is a Christian community committed to the goal of being an inclusive community of learners. In our commitment to students of special needs we recall the words of Pope John Paul II at B.C. Place in 1984, "the value and dignity of the human person does not arise from the physical or mental qualities, from efficiency, productivity, or speed in one's actions. It comes rather from the fundamental fact that each individual is created by God and redeemed by the blood of his Son, Jesus Christ." Our commitment is rooted in the fact that we are all God's children.

Policy

The CISVA is committed to the education of the whole child in the spiritual, emotional/social, intellectual, artistic/aesthetic and physical realms.

Procedure

Each Catholic school community is to implement a program and curriculum enabling it to accept and meet the needs of all Catholic students in their community.

Consistent with this goal is an effort to make our facilities more accessible for students with special needs.

APPENDIX "K"

RESPONDING TO STUDENT ABUSE/NEGLECT 405

Rationale

Every student has a right to a life free of abuse, neglect and violence. Child abuse is a serious societal issue. As “service providers”, everyone in the CISVA must be aware of signs of child abuse or neglect and know how to respond to them.

Guiding Principles:

- 1 The safety and well-being of children are the paramount considerations.
- 2 Children are entitled to be protected from abuse, neglect, harm or threat of harm.
- 3 A family is the preferred environment for the care and upbringing of children and the responsibility for the protection of children rests primarily with the parents.
- 4 If, with available support services, a family can provide a safe and nurturing environment for a child, support services should be provided.
- 5 The child’s views should be taken into account when decisions relating to a child are made.
- 6 Kinship ties and a child’s attachment to the extended family should be preserved if possible.
- 7 The cultural identity of Aboriginal children should be preserved.
- 8 Decisions relating to children should be made and implemented in a timely manner.

Policy

The CISVA Board prohibits any form of child abuse, neglect or violence. The *Child, Family and Community Service Act* requires anyone who has reason to believe that a child has been or is likely to be at risk has a legal duty to make a report to a child welfare worker or directly to the police if a child is in immediate danger.

- A. At the beginning of each school year, the school principal will review with all school personnel the following 3 documents:
 - a. “*BC Handbook for Action on Child Abuse and Neglect*” (BC Ministry of Children and Family Development)
 - b. “*Responding to Child Welfare Concerns*” (BC Ministry of Children and Family Development)
 - c. “*Supporting our Students: A Guide for Independent School Personnel Responding to Child Abuse*” (Office of the Inspector of Independent Schools BC)
- B. The school principal is designated as the ‘*Appointed School Official*’ in accordance with *Supporting Our Students: A Guide for Independent School Personnel Responding to Child Abuse*.
- C. Schools will protect personal information regarding child abuse, neglect or violence against improper or unauthorized disclosure and use.
- D. School personnel will report suspected child abuse, neglect or violence immediately. Everyone who has a reason to believe that a child has been or is likely to be physically harmed, sexually abused or exploited, or neglected by a parent, or otherwise in need of protection as set out in Section 13 of the *Child, Family and Community Service Act* is legally responsible under section 14 of that Act to report promptly to a social worker. School personnel, who are uncertain about their duty to report, will consult with a social worker who can discuss the options and course of action.

- E. School personnel will inform the principal (or another school official in the event that the principal is the alleged offender) as soon as possible. For further details see
- F. School personnel will co-operate with the resulting investigation.
- G. School personnel will support students who have experienced child abuse, neglect or violence.

Procedure

Anyone who thinks a child is being abused or neglected, has the legal duty to report the concern to a local child welfare worker. There is contact information available on page 12 of *The B.C. Handbook for action on Child Abuse and Neglect*. If it is after hours or in the case of uncertainty about who to contact, call the Helpline for Children toll free at 310-1234 (area code not required) at any time of the day or night. The caller's name is not required. **If the child is in immediate danger, call 9-1-1.**

Summary of Roles and Responsibilities

- 1 Parents have the primary responsibility to protect their children. When parents are unwilling or unable to care for a child or protect the child from harm, the Ministry of Children and Family Development (MCFD) is authorized to intervene.
- 2 MCFD has the lead responsibility for responding to suspected child abuse and neglect. It also delegates authority for child protection and family support to Aboriginal Child and Family Services Agency, which provide services to their communities.
- 3 Police respond when a child is in immediate danger and investigate suspected cases of criminal offence.
- 4 Service providers must be aware of signs of possible child abuse or neglect and respond to any concern about a child's safety or well-being.
- 5 The school principal is the designated "Appointed School Official", who may be required to:
 - ☐ investigate on behalf of the school authority;
 - ☐ ensure a safe school environment during investigations;
 - ☐ consult with the child welfare worker and/or police;
 - ☐ ensure that no school employee interferes with any investigations;
 - ☐ communicate with parents with respect to actions taken by the school authority;
 - ☐ report to the British Columbia College of Teachers and/or the Inspector of Independent Schools when the School Authority dismisses, suspends or otherwise disciplines a certified teacher (Independent School Act section 7);
 - ☐ refer student(s) for counseling.
- 6 Anyone who has reason to believe a child may be at risk and the child's parent is unwilling or unable to protect the child has a legal duty to report to a child welfare worker. The duty to report overrides any duty to protect the privacy of clients, patients, students or staff with the exception of solicitor-client privilege or confidentiality provisions of the federal *Youth Criminal Justice Act*.

Appendix A – Legislation

Child, Family and Community Service Act

The *Child, Family and Community Service Act* is the legislative authority for child welfare in British Columbia. Its fundamental guiding principle is that the safety and well-being of children are the paramount considerations. The *CFCSA* is available online at www.qp.gov.bc.ca/statreg/stat/C/96046_01.htm

Part 3, Section 13 of the “*Child, Family and Community Service Act 1996*” (amended 2002) clarifies when protection is needed and the duty to report child protection concerns. Section 13 (1) A child needs protection in the following circumstances:

- (a) if the child has been, or is likely to be, physically harmed by the child's parent;
- (b) if the child has been, or is likely to be, sexually abused or exploited by the child's parent;
- (c) if the child has been, or is likely to be, physically harmed, sexually abused or sexually exploited by another person and if the child's parent is unwilling or unable to protect the child;
- (d) if the child has been, or is likely to be, physically harmed because of neglect by the child's parent;
- (e) if the child is emotionally harmed by the parent's conduct;
- (f) if the child is deprived of necessary health care;
- (g) if the child's development is likely to be seriously impaired by a treatable condition and the child's parent refuses to provide or consent to treatment;
- (h) if the child's parent is unable or unwilling to care for the child and has not made adequate provision for the child's care;
- (i) if the child is or has been absent from home in circumstances that endanger the child's safety or well-being;
- (j) if the child's parent is dead and adequate provision has not been made for the child's care;
- (k) if the child has been abandoned and adequate provision has not been made for the child's care;
- (l) if the child is in the care of a director or another person by agreement and the child's parent is unwilling or unable to resume care when the agreement is no longer in force.

(1.1) For the purpose of subsection (1) (b) and (c) and section 14 (1) (a) but without limiting the meaning of "sexually abused" or "sexually exploited", a child has been or is likely to be sexually abused or sexually exploited if the child has been, or is likely to be,

- (a) encouraged or helped to engage in prostitution, or
- (b) coerced or inveigled into engaging in prostitution.

(2) For the purpose of subsection (1) (e), a child is emotionally harmed if the child demonstrates severe

- (a) anxiety,
- (b) depression,
- (c) withdrawal, or
- (d) self-destructive or aggressive behaviour.

Criminal Code of Canada

The *Criminal Code* provides the justice system with the legal authority to enforce criminal law as it applies to the abuse and neglect of children. It establishes criminal offences, procedures for investigation, and prosecution and sanctions for offenders. The *Criminal Code* is available online at <http://laws.justice.gc.ca/en/C-46/>

Appendix B – Glossary / Definitions

A number of the terms used in this policy have specific meanings in the context of the British Columbia child welfare system. These are defined below to help ensure clarity and support a collaborative response to suspected child abuse and neglect.

Appointed School Official: the school principal

Aboriginal: includes the Indian, Inuit and Métis peoples

Caregiver: a person who is legally responsible for a child's day-to-day care, for example, a foster parent

Child: anyone under the age of 19 in British Columbia; cf. *Child, Family and Community Service Act (CFCSA)*

Child welfare worker: a person delegated under the *CFCSA* to provide child welfare services, including responses to suspected child abuse and neglect

Delegated Aboriginal Child and Family Services Agency: an organization that provides culturally-appropriate services to aboriginal children and families, and whose child welfare workers have delegated authority under *CFCSA* to provide child welfare services, including responses to suspected child abuse and neglect

Director: a person designated by the Minister of Children and Family Development under the *CFCSA*. The director may delegate any or all of his/her powers, duties and responsibilities under the *Act*.

Emotional Abuse: The most difficult type of abuse to define and recognize. It may include ignoring or habitually humiliating the child or withholding life-sustaining nurturing. It involves acts or omissions likely to have serious negative emotional impacts. Emotional abuse may occur separately from or with other forms of abuse and neglect. It includes the emotional harm caused by witnessing domestic violence.

Emotional harm: When emotional abuse is chronic and persistent, it can result in emotional harm to the child. Under the *CFCSA* a child is defined as emotionally harmed if they demonstrate severe:

- ☐ anxiety
- ☐ depression
- ☐ withdrawal
- ☐ self-destructive or aggressive behaviour

Neglect: Neglect is failure to provide for a child's basic needs. It involves an act of omission by the parent or guardian, resulting in (or likely to result in) harm to the child. Neglect may include failure to provide food, shelter, basic health care, supervision or protection from risks, to the extent that the child's physical health, development or safety is, or is likely to be, harmed.

Parent or Guardian: the mother or father of a child; a person to whom custody of the child has been granted by a court order or agreement; a person with whom the child resides and who stands in place of the child's mother or father.

Physical Abuse: Physical abuse is a deliberate physical assault or action by a person that results in, or is likely to result in, physical harm to a child. It includes the use of unreasonable force to discipline a child or prevent a child from harming himself/herself or others.

Service provider: employees and volunteers of the CISVA

Sexual Abuse: Sexual abuse is when a child is used (or likely to be used) for the sexual gratification of another person.

Sexual Exploitation: Sexual exploitation is a form of sexual abuse that occurs when a child engages in a sexual activity, usually through manipulation or coercion, in exchange for money, drugs, food, shelter or other considerations.

References: Child, Family and Community Service Act BC <i>BC Handbook for Action on Child Abuse and Neglect</i> ; (Ministry of Children and Family Development BC) <i>Responding to Child Welfare Concerns</i> (Ministry of Children and Family Development BC) <i>Supporting our Students: A Guide for Independent School Personnel Responding to Child Abuse</i> (Office of the Inspector of Independent Schools BC) <i>Student Records: Requirements and Best Practice Guidelines for Independent Schools</i> (Office of the Inspector of Independent Schools BC)	Approved: January 4, 2004 (Format updated September 8, 2006)
Personal Information Protection Act (PIPA) Youth Criminal Justice Act	Date(s) Revised: June 21, 2007 October 14, 2009 October 5, 2010 December 7, 2010

APPENDIX "L"



GENERAL SCHOOL ADMINISTRATION STUDENT HEALTH 406

Rationale

To promote the health of students, the CISVA works with the Ministry of Health, the medical health professionals of Vancouver Coastal Health and Fraser Health Authorities.

Policy

In accordance with the BC Health Act (Schools) CISVA schools are to have procedures in place that cover communicable disease control (immunization), prevention of infection from blood-borne viruses, school management of students infected with blood borne pathogens, and prevention and management of anaphylaxis in a school setting.

Procedure

1. Communicable Disease Control

The immunization program provided by Vancouver Coastal Health (VCH) and Fraser Health Authorities is aimed at maintaining adequate levels of protection in school populations against major vaccine-preventable diseases.

The school administrator will:

- a) Distribute immunization information and consent forms (VCH, FHA, school and/or CISVA information are distributed as necessary);
- b) Collect completed forms for the community health nurse (to be handed over to the community nurse once collected);
- c) Provide a safe environment in the school for delivery of the immunization program.

The Parent/Guardian will:

- a) Provide immunization records when a student registers in the school for the first time.
- b) Provide a completed consent form for the student for all immunizations (consent form will indicate yes or no).

The Student will:

- a) Return signed parental consent forms to the school (no student can give personal consent for an immunization).
- b) Attend designated immunization areas in an orderly manner.

2. Prevention of Infection from Blood-Borne Viruses (HIV, HEP B, HEP C)

Use gloves at all times to avoid contact with blood or body fluids.

Dispose of dressings and materials used to cleanse wounds in a plastic bag-lined covered receptacle.

Use approved disinfectant for blood spills.

Provide a puncture-proof sharps container to discard contaminated objects.

3. Students Infected with Blood Borne Pathogens

Mandatory disclosure of infection is not required; assume that anyone could be infected with blood borne pathogen.

Follow all Ministry of Health Guidelines in prevention of infection.

Follow local health authorities' (VCH & Fraser Health) guidelines on flu infection in the school (i.e. 10% of school population absent due to illness reporting procedure).

4. Prevention and Management of Anaphylaxis in the School Setting

Although most anaphylactic children learn to administer their own medication by about age 8, individuals of any age may require help during a reaction due to rapid progression of the symptoms. Therefore, adult supervision is required.

- a) Provide training for all staff members in the use of the epinephrine injector.
- b) Telephone 911 and inform that a child is having an anaphylactic reaction.
- c) Telephone parents/guardians.
- d) Have a staff member accompany the child to the hospital if parent not available or not immediately present to receive the child at the hospital.
- e) Location of Epinephrine:
 - o Epinephrine injectors provided by the parent/guardian should be kept in a covered and secure area (unlocked) known to all staff.
 - o As soon as students are old enough they should carry their own injectors.
- f) Review school emergency procedures for each anaphylactic student with staff and parents/guardians annually and as directed by a physician.

5. Children with Medical Conditions Children with medical conditions such as seizures, asthma or diabetes are to have a care plan in place. The Community Health nurse can be a source of information and assistance in effecting a plan. For additional diabetes resources for schools refer to the BC Children's Hospital Endocrinology website.

Parents' Role (see VCH Section 13 of School Health Manual)

- a) Make the school aware of their child's medical condition and provide updates if this condition changes.
- b) Assist the school in completing a care plan for their child.
- c) Provide appropriate medications both for management and emergency and determine a plan with the school about where and how these should be kept and administered.

School's Role (see VCH Section 13 of School Health Manual)

- a) Keep a record of students who have identified medical conditions.
- b) Ensure that care plans for students with medical conditions are updated regularly.
- c) Consult with the Community Health nurse if you have questions about a care plan for a student. (see VCH website – plan forms available for download.)

Administration of Medication

In the case of ongoing administration or self administration of medication or provision of a health care procedure a plan with parental consent is to be in place with accompanying medical documents and/or support.

In the case of the administration or self administration of medication (Tylenol, Advil etc) that is occasional parental permission is to be provided.

If medication is required while a student is attending school, an administrator or any person designated by him/her shall administer or supervise the self administration of medication. If required the community health nurse will train a person/persons in the administration of medication or health care procedure.

No person shall perform any medical or health care procedure or administration of a medication that endangers the well being of a student or subjects that person to risk of injury or liability of negligence. (The exception is in the case of a life threatening emergency).

Head Injuries All head injuries are to be reported and filed.

Parent/guardian is to be informed and made aware of the injury.

A student with a head injury is to be monitored for symptoms of possible concussion.

Reference: BC Health Act Vancouver Coastal Health website (student health –Your Health	Approved: Board of Directors
link) Fraser Health Regional Health Protection Guideline (VCH) Mayo Clinic website (head injuries) 'thinkfirst' Football BC – www.playfootball.bc.ca (concussions)	Date Approved: January 3, 2012
Cross-reference:	Date(s) Revised:

APPENDIX "M"

ST. PAUL SCHOOL POLICY REGARDING ANAPHYLAXIS/ALLERGY AWARENESS

Anaphylaxis is a severe, life-threatening reaction to an allergen (a substance that causes allergy). Reactions are often rapid, occurring within seconds of exposure, and in some cases to only microscopic amounts of the allergen.

Peanut products are by far the most common allergens causing anaphylaxis. Peanut butter presents particular challenges in terms of cleanliness and cross-contamination. Examples of other life-threatening allergens are:

- foods, e.g. eggs, fish, milk nut products
- insect stings
- drugs e.g. penicillin
- latex

Ensuring the safety of anaphylactic children in a school setting depends on the cooperation of the entire school community. To minimize the risk of exposure, and to ensure rapid response to emergency, parents, students, and school personnel must all understand and fulfill their responsibilities. For efficient retrieval, the school requires that each student in **Grades 1 to 7** who necessitates the use of an injection kit **must carry an up-to-date auto injector kit on his/her body at all times**. This is accomplished through the use of a “fanny-pack” or auto injector kit pack that straps to the child’s waist, belt or belt loop. A second injection kit will also be provided to the school office for back up. Kindergarten students who require the use of an injection kit will also provide 2 injection kits to the school; one to the school office, and one that will be supervised by the classroom teacher. **Kindergarten students are not required to carry their injection kit on their body. It will be supervised and stored by the classroom teacher.**

Responsibilities of the Parents of a Child who has anaphylaxis:

- Inform the school of their child's allergies.
- Provide a medic alert bracelet for their child.
- Provide the school with physician's instructions for administering medication.
- Provide the school with 2 up-to-date injection kits, and keep them current; one to keep in the office, and one for the child to carry at all times. (Gr. 1-7)
- Provide the child with an injection kit pack to carry at all times. (Gr. 1-7)
- Provide support to school and teachers as requested.
- Provide permission to post photographs and medical information in key locations such as the classroom, staff room, nurse's room, etc.
- Participate in parent support groups.
- Assist in school communication plans.
- Review the school action plan with school personnel.
- Help supply information for school publications such as:
 - recipes;
 - foods to avoid;
 - alternate snack suggestions; and resources

- When possible, provide approval of and permission for all foods eaten outside the home. Alternative treats for occasions when parents are unable to give approval should be supplied by the family of the student to replace foods involved in an event if needed. These items should be labeled with the student's name and class and may be stored in the school. For Parish/Community/School functions occurring outside of school hours, parents are responsible for the communication related to food if their children are attending. Alternative food may need to be provided.

- **Teach their child:**

- to recognize the first symptoms of an anaphylactic reaction;
- to know where the medication is kept, and who can get it;
- to communicate clearly when he/she feels a reaction starting;
- to carry his/her own auto-injector in a fanny-pack;
- not to share snacks, lunches or drinks
- to report bullying and threats to an adult in authority;
- to take as much responsibility as possible his/her own safety.
- to understand that there will be times where the child will not be able to share in the same things as their peers.

Responsibilities of the School:

- Work as closely as possible with the parents of the anaphylactic child.
- Ensure that the parents have completed all necessary forms.
- Ensure the instructions from the child's physician are on file.
- Notify the school community at the beginning of the school year of the anaphylactic child, the allergens, and the treatment.
- Post allergy-alert forms in the staff room and office.
- Maintain up-to-date emergency contacts and telephone numbers.
- Ensure that all staff and volunteers have annually received instruction with the auto-injector.
- Ensure that all substitute teachers are informed of the presence of an anaphylactic child, and have been adequately trained to deal with an emergency.
- Inform all parents that a child with life-threatening allergies is attending the class/school, and ask their support.
- Develop a school policy for reducing risk in classrooms and common areas.
- Follow disciplinary procedure for dealing with bullying and threats.

Responsibilities of School Staff:

- Display a photo/poster in the classroom, with parent approval.
- Discuss anaphylaxis with the class, in age-appropriate terms.
- Encourage students not to share lunches, trade snacks, utensils, or containers.
- Choose allergy-free foods for classroom events.
- Notify the parent of the anaphylactic child at least 24 hrs prior to a school event (when possible/practical) where outside food will be consumed, so that the parent may

have the opportunity to come in and approve any outside food.

- When parent approval is not possible/practical, only pre-approved food that is kept at school may be given.
- Encourage the child with anaphylaxis to take mealtime precautions such as:
- placing food on wax paper or napkin rather than on desk or table;
- taking only one item at a time from the lunch bag to prevent others from touching food;
- packing up their lunch and leaving it with lunch supervisors, if it is necessary to leave the room during lunchtime.
- Establish procedures to ensure that the anaphylactic child eats only what he/she brings from home.
- Establish at least one common eating area, or a section, that is "allergen-aware".
- Refrain from having anaphylactic child involved with garbage disposal, yard clean-ups, or other activities which would bring them into contact with food wrappers, containers, or debris.
- Allow the child to keep the same desk all year.
- Reinforce hand-washing before and after eating.
- Facilitate communication with other parents.
- Follow the school policies for reducing risk in classrooms and common areas.
- Enforce school rules about bullying and threats.
- Leave information in an organized, prominent, accessible and highly visible format for substitute teachers. If it is not posted in the classroom, it should be in the teacher's daybook.

Responsibilities of the Public Health/School Nurse

- Consult with and provide information to parents, students and school personnel.
- Participate in planning school policy.
- Participate in in-service and auto-injector training.
- Assist in developing emergency response plans.
- Refer known cases of anaphylaxis to the school principal.

Responsibilities of Students who have anaphylaxis:

- Carry an auto-injector on his/her body at all times (Gr. 1-7)
- Know how to use an auto-injector.
- Take as much responsibility as possible in avoiding allergens.
- Eat only foods brought from home.
- Take responsibility for checking labels and monitoring intake (older students).
- Wash hands before/after eating.
- Learn to recognize symptoms of an anaphylactic reaction.
- Promptly inform an adult as soon as accidental exposure occurs.
- Promptly inform an adult as soon as symptoms appear.

Responsibilities of All Parents

- Do not send peanut or nut containing foods to school for snacks or lunches.
- Home-made items that are brought to school should be prepared without peanut or nut ingredients, and with steps to avoid cross contamination with peanuts or nuts. This includes baking on clean surfaces with clean baking equipment, and keeping all peanut or nut products stored away from the baking area and baked items.
- Provide a list of all ingredients of foods prepared at home that are brought to the class of an anaphylactic child.
- Participate in parent information sessions.
- Encourage children to respect anaphylactic children and school policies.
- Bring concerns about controlling the contents of school lunches and snacks to the principal, not to the parents of the child with anaphylaxis

Responsibilities of All Students

- Learn to recognize symptoms of anaphylactic reaction.
- Avoid sharing food, especially with anaphylactic children.
- Follow school rules about keeping allergens out of the classroom.
- Follow school rules about washing hands.
- Refrain from "bullying" or "teasing" a child with a food allergy.