

Christine Ong

To: all.families@stpaulschool.ca
Cc: all.staff@stpaulschool.ca; St. Paul Parish Richmond
Subject: Thursday Letter
Attachments: Samaritan's Purse.pdf; How to Pack Your Shoebox.pdf; Shoebox Label.pdf

Importance: High



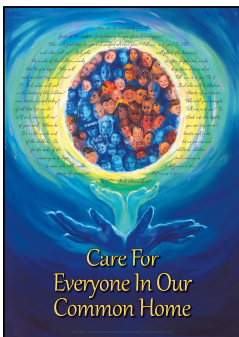
Dear Parents,

You will have noticed that construction has started up again on the property. We will very quickly get into the thick of things. The next activity that will directly affect our school families is the blocking off of the back portion of the grass field, which will be paved over to make room for more parking. We hope to still keep at least some of the back parking lot open during this process, however we have not received final details yet. There will also be impending changes to the drop off lane at the front of the school, with large trucks needing to access the property. Again, we will communication information as soon as we know it.

That being said, we ask that our families be prepared for sudden changes to routine and accessibility at any given time. We ask for your patience and flexibility, as I'm sure you can appreciate the challenge of managing such a huge construction project on school property. Our main priority is the safety of our students, staff and families. Thank you for your understanding.

Yours in faith,

Maureen Moorehead
Principal



“Never worry about numbers. Help one at a time, and always start with those nearest you.” Mother Teresa



Shoebox Drive for Samaritan's Purse – Just a reminder that shoeboxes are due in by **Tuesday, Nov. 8th**. Detailed information and label attached.

How much did we raise? Which classes won the pizza party? – Come see the big reveal, and find out the answers to these questions at our exciting **Walkathon assembly** tomorrow! 9:00 am in the gym.

Tomorrow's Assembly – Gr. 4 and 1 to lead. 9:00 am in the gym.

Gr. 7 Spirit Day – this Saturday, Nov. 4th. Please pray for our Gr. 7 students as they awaken the Holy Spirit within themselves, in preparation for receiving the sacrament of Confirmation.

Daylight Saving Time Ends – Sunday, Nov. 5th. Set your clocks **BACK one (1) hour** before going to bed.

Hot Lunch – Monday, Nov. 6th.

Remembrance Day Assembly – Friday, Nov. 10th. **10:45 am in the gym.** Gr. 7 class to lead.

Parent Volleyball Night – Inviting all school parents to a fun filled evening on Friday, November 17 from 6pm to 9pm. Food and drinks will be sold on a pre-order basis by the Grade 6 Parents. Deadline for food orders, **Friday, November 10th**. Child Minding will also be offered during the night on a first come first serve basis.

No school Nov. 13th and 14th – A reminder that there is no school on **Monday, Nov. 13th**. (Stat holiday) and **Tuesday, Nov. 14th** (Professional Development day).



Parish Advent Fundraiser – In support of the New Church Building Fund, the parish is hosting Fr. Robert Galea, from the Archdiocese of Victoria in Australia, for an evening of music and song. Fr. Galea, together with Psalm Ninety-Eight Music Ministry, will perform at St. Monica Parish on Nov. 10th at 7:00 pm. Tickets are \$15 each. For tickets, please email Mercedes Tangi at mercedestangi@gmail.com.



When Parents Have Concerns – If at any time you have a concern regarding your child, a school event, a staff member, or an incident that happened, we ask that you **please come and speak with your child’s teacher**. The only way that concerns can be effectively resolved is through open communication between home and school, resulting in accurate information being shared, and an informed understanding of your concern.

Planning the school year? – If you are looking for professional days, dates for school holidays, etc., our online calendar is updated to June 2018. The calendar can be accessed through the school web site at www.stpaulschool.com.

When your Child is Sick – In anticipation of cold and flu season, we’d like to remind parents to be prudent when it comes to deciding when to keep your child home, or when to send him/her to school if he/she has just recovered from being ill. **Some basic guidelines are as follows:** **24 hours** after temperature returns to normal, or after gastrointestinal illness (**vomiting/diarrhea**); contagious infections such as suspected **pink eye or strep throat**; unexplained **skin rash**; **severe cough and cold** symptoms. Exercising proper hand washing techniques is also crucial to helping prevent the spread of viruses. This will go a long way to keep our student and staff population happy and at school.



This email and any files transmitted with it are confidential and intended solely for the use of the individual or entity to whom it is addressed. Distribution, use or copying of this email or the information it contains by other than the intended recipient is unauthorized. If you have received this email in error, please delete it and notify the sender immediately.